



Back and Forth and Back Again 40 Years - Part 3

From March 6 until April 4, 2026

Lumen Travo Gallery, Amsterdam

This closing chapter explores our relationship with nature – both nurturing and implacable – and the relentless exploitation of the natural world. More introspective than the preceding sections, it reflects on our place within a fragile ecosystem, drawing on history, philosophy and the broader human condition.

Artists **Dennis Adams, Tiong Ang, Matea Bakula, Razia Barsatie, Yvonne Dröge Wendel, Rini Hurkmans, Remy Jungerman, Kristiina Koskentola, Otobong Nkanga, Daniel de Paula, Jens Pfeifer, Hans Scholten, Joseph Sassoon Semah** and **Judith Westerveld** find a space here where their multidisciplinary practices are woven together, allowing meaningful connections and revelations on life and the afterlife to emerge.

Jens Pfeifer, *Guns* (2001-2002)
Lumen Travo Gallery, 2026
Credits: Giovanni Nardi





Installation view, 2026, Lumen Travo gallery. Credits: Giovanni Nardi



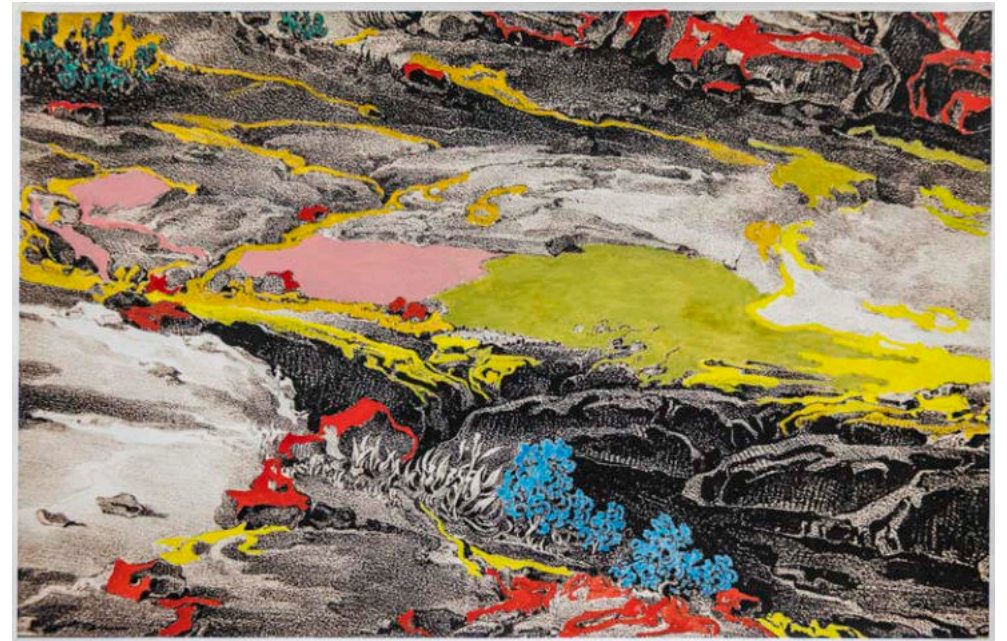
Cláudia Cristóvão
Less than a Thousand Words (2011)
Digital c-print. Ed. 3 + 1 a.p.
149 x 100 cm



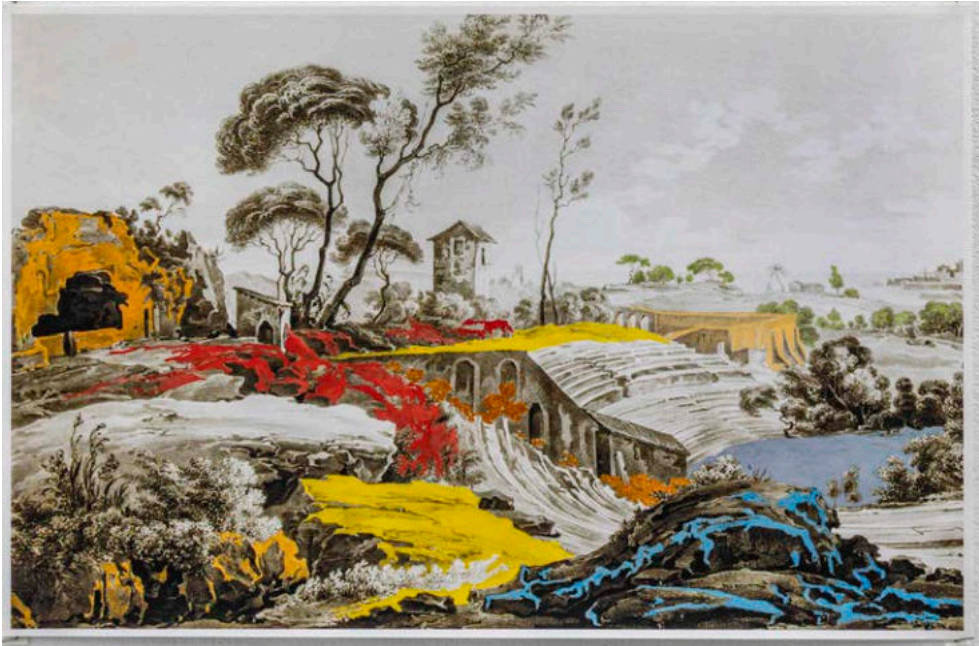
Installed in a sequence that echoes natural cycles, the works move through stages of birth, decay and regeneration. Elements from the natural world are often placed alongside artificial materials, creating tensions between permanence and change. All the artists introduced here find a space where their multidisciplinary practices intersect, allowing connections to emerge around life, memory and what remains after us. What do we leave behind when we are gone?



Hans Scholten
Vedute pittoriche #13 (2021)
Mixed media on paper
39 x 59 cm



Hans Scholten
Vedute pittoriche #7 (2021)
Mixed media on paper
39 x 59 cm



Hans Scholten
Vedute pittoriche #14 (2021)
Mixed media on paper
39 x 59 cm



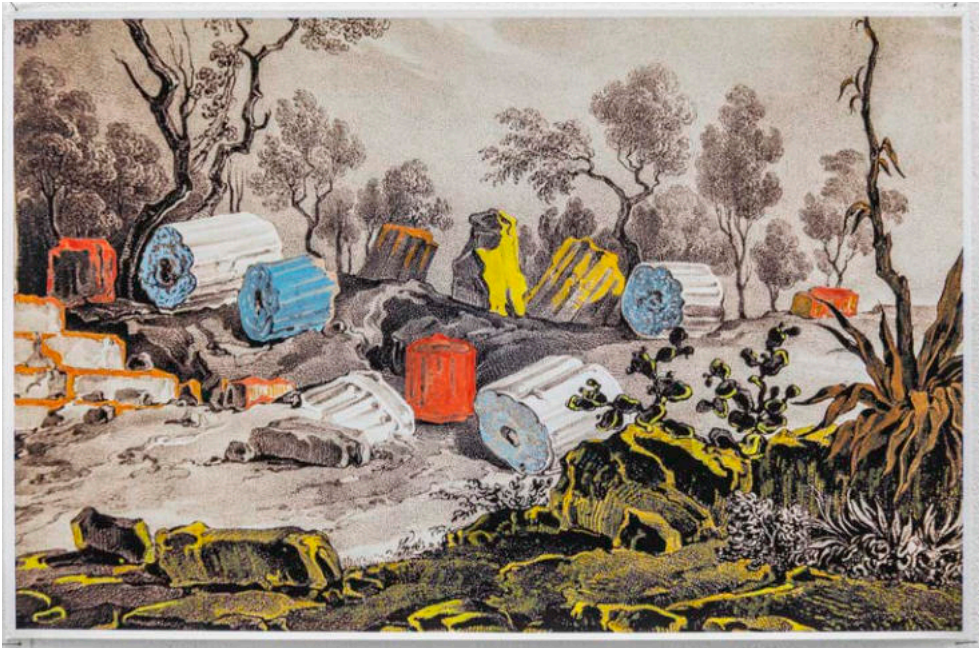
Hans Scholten
Vedute pittoriche #1 (2021)
Mixed media on paper
39 x 59 cm



Hans Scholten
Vedute pittoriche #13 (2021)
Mixed media on paper
39 x 59 cm



Hans Scholten
Vedute pittoriche #7 (2021)
Mixed media on paper
39 x 59 cm



Hans Scholten
Vedute pittoriche #4 (2021)
Mixed media on paper
39 x 59 cm



Hans Scholten
Vedute pittoriche #11 (2021)
Mixed media on paper
39 x 59 cm



Kristiina Koskentola
About Rationality IV (2020)
Concrete casts of a
human skull borrowed
from a Chinese doctor's
office, a river stone.
13 x 110 x 110 cm



Installation view, 2026, Lumen Travo gallery. Credits: Giovanni Nardi



Razia Barsatie
Burn Mark (2026)
Flour dough on wood panel, engraved
Diameter 28 cm



Razia Barsatie
The Engraved Responsibility (2026)
Flour dough on wood panel, engraved
Diameter 28 cm



Razia Barsatie
Surface Under Pressure (2026)
Flour dough on wood panel, engraved
Diameter 28 cm





Yvonne Dröge Wendel
One object speaking English and one
object being
tired #1(2001)
Antique Chinese porcelain and merino
wool



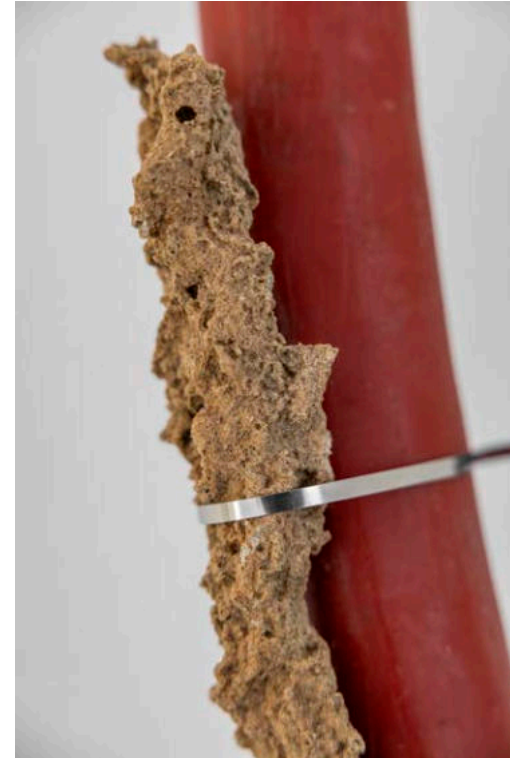
Yvonne Dröge Wendel
One object speaking English and one
object being
tired #2 (2001)
Bronze, wood and merino wool



Yvonne Dröge Wendel
One object speaking English and one
object being
tired #3 (2001)
Venetian Alabaster and merino wool



Yvonne Dröge Wendel
One object speaking English and one
object being
tired #4 (2001)
Late 19th century German porcelain and
merino
wool



Daniel de Paula
Power-flow (2020)
Fulgurite,
infrastructural energy
cable, and zip ties
81 x 8 x 29 cm



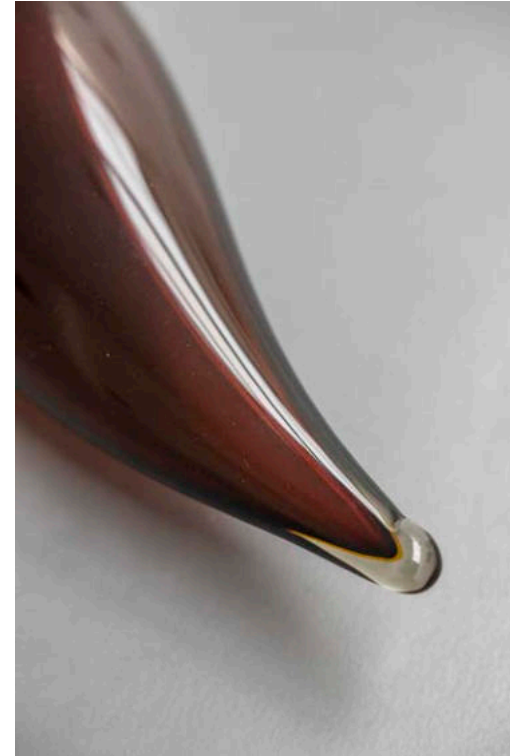


Matea Bakula
The Martyr II (2019)
Beeswax, wood, steel
56 x 38 x 8 cm



The relationship between humans and the land becomes even more direct in the photographic series *Alterscapes: Playground* (2005–2015) by Otobong Nkanga. The artist appears within landscapes where the scale between body and environment is deliberately distorted. Her body merges with the terrain, her legs sinking into the ground as if the earth itself were an abundant table laid for a feast. The series reflects on humanity's complex and often extractive relationship with the land.

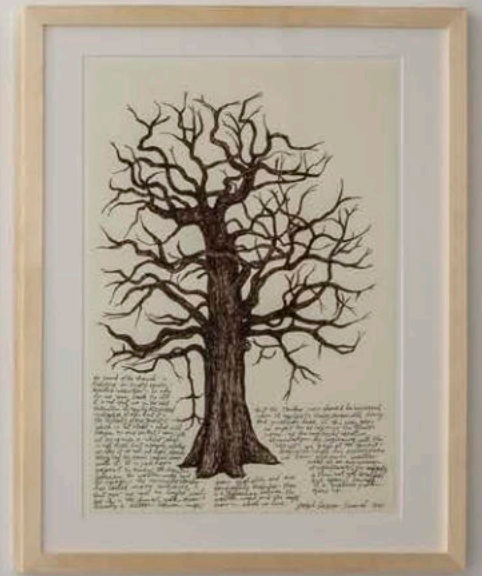
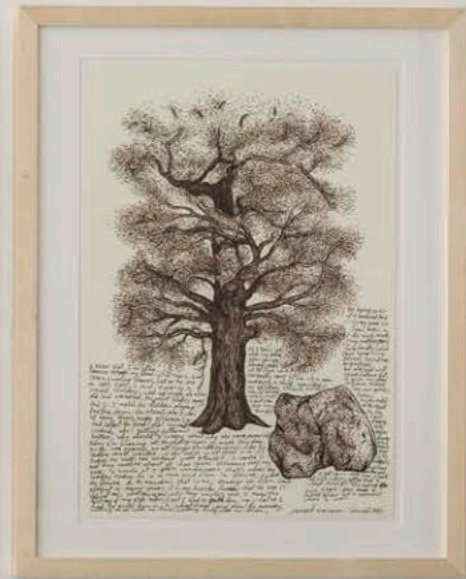
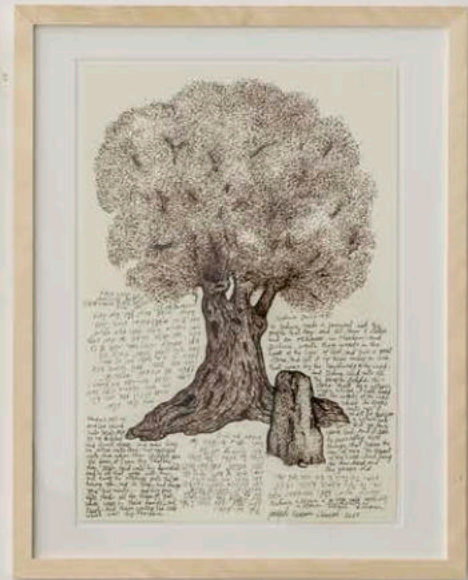
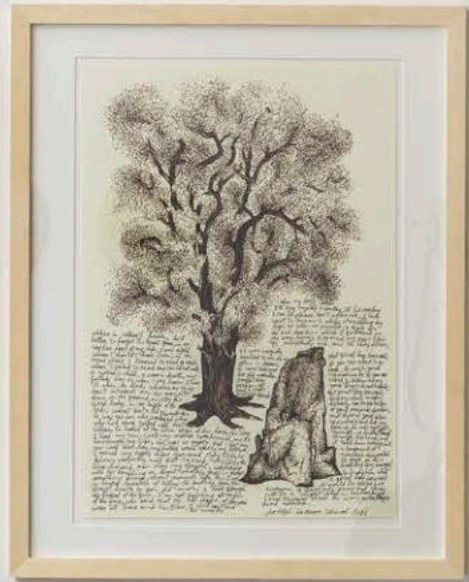
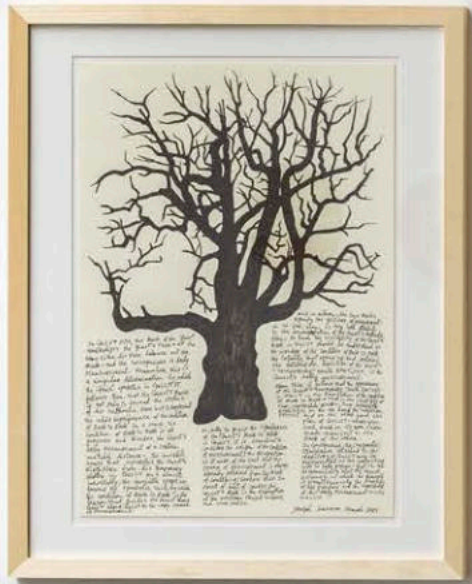
Nkanga's sculpture *Amulet*, installed at the centre of the space, introduces another form of interaction with the environment. Just as a personal amulet protects its wearer from perceived negative forces, *Amulet* extends this idea beyond the body into the surrounding space, suggesting a porous boundary between the two.



Otobong Nkanga
Amulet (2025)
Murano glass, handmade rope, ceramic
hexagon,
metal connectors
Unique piece



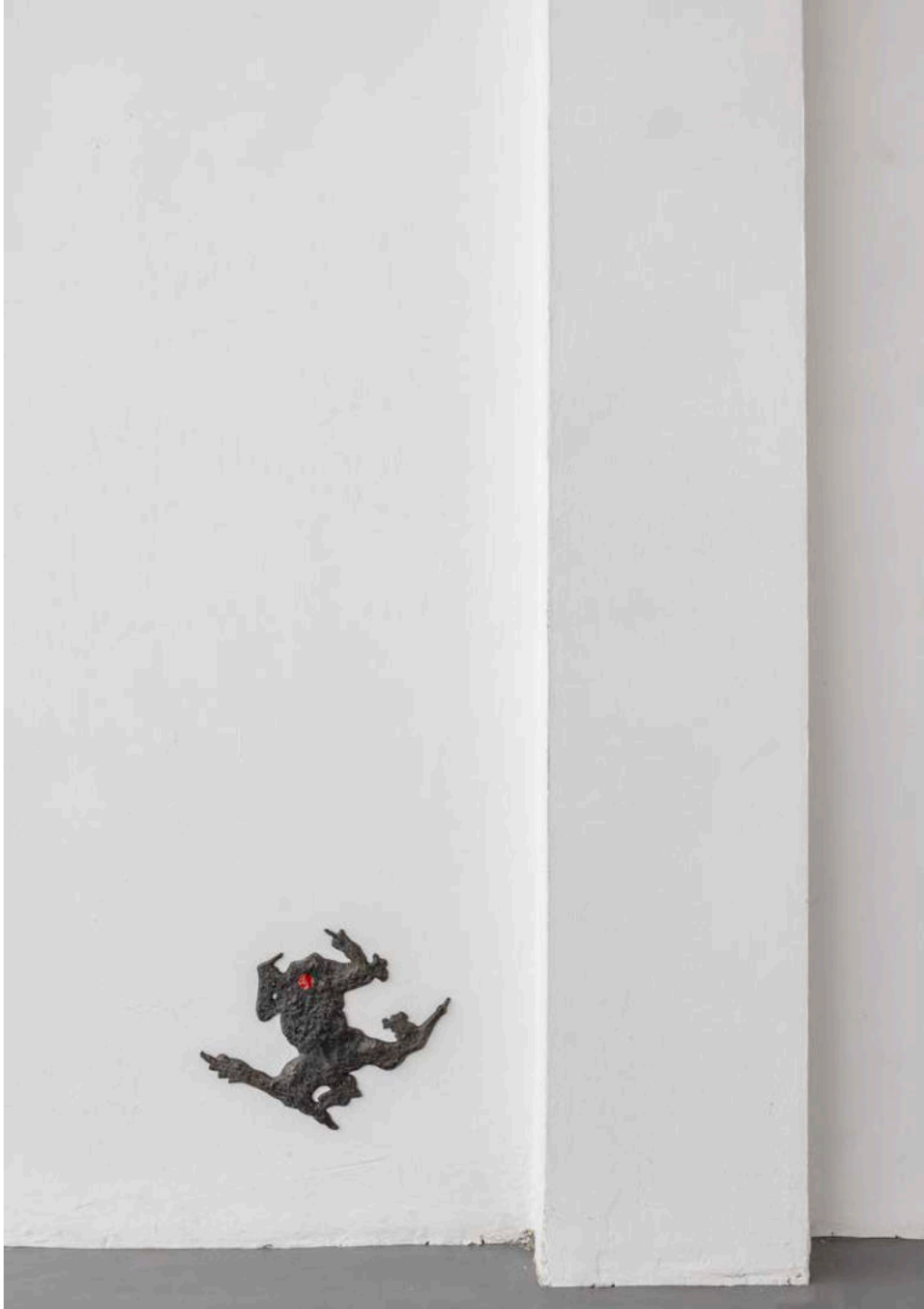
Otobong Nkanga
Alterscapes: Playground A (2005)
C-print on photographic paper, mounted
on
aluminum
50 x 67 cm
Edition 7/7



Joseph Sassoon Semah
From the diary of an Architect (2021)
Ink on paper
53 x 43 cm each (framed)



Installation view, 2026, Lumen Travo gallery. Credits: Giovanni Nardi

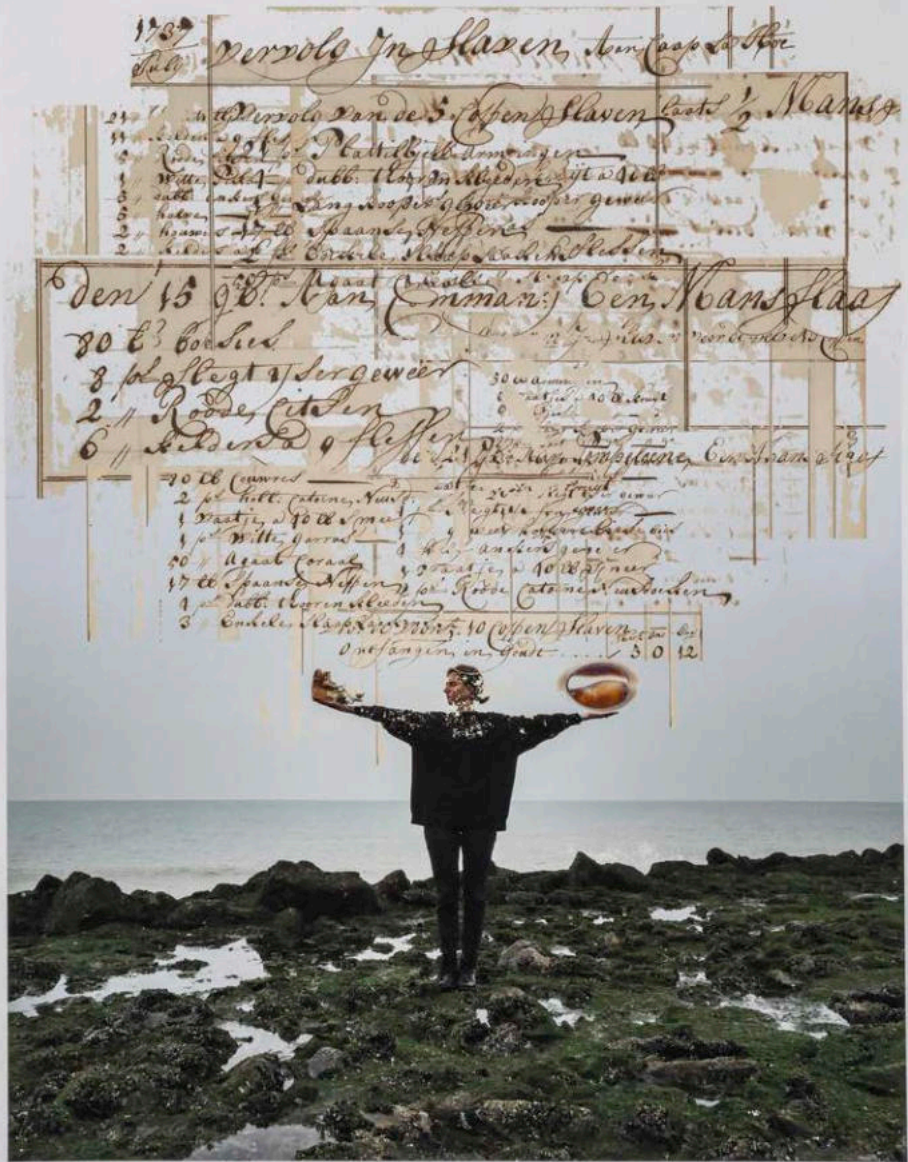


Remy Jungerman
Z.T. (1998)
Bronze
25 x 30 cm

Not for sale



Judith Westerveld
Monetaria moneta (2020)
Pigmented inkjet print on Hahnemüle
White Velvet
270g paper. Edition of 5.
72.5 x 55 cm



Judith Westerveld
Monetaria moneta (2020)
Pigmented inkjet print on Hahnemüle
White Velvet
270g paper. Edition of 5
72.5 x 55 cm



Rini Hurkmans
Pietà, Millefleurs, Verdure (2024)
Textile work (Polyester,
mohair, viscose,
organic cotton, merino
wool)
Variable dimensions



Tiong Ang
Models for (the) People (2008)
Video installation (HDV digital film)
15.30 min

Back and Forth
and Back again
40 Years





Dennis Adams
Double Feature (2008)
Digital C-print
84 x 61 cm each



the series by Jens Pfeifer presents glass sculptures in the shape of guns. Gigantic, curvy, excessive and colorful, their materiality is simultaneously grotesque and strangely seductive, evoking a sex-toy-like aesthetic. In his practice, Pfeifer often explores the world of animals and their relationship with humans, creating works that are both alluring and unsettling. In this context, the sculptures resonate with the exhibition's themes, bringing the exhibition full circle between transformation, power and human intervention in both natural and artificial worlds.



Jens Pfeifer
Guns (2001-2002)
Glass
13 x 54 x 13 cm



Jens Pfeifer
Guns (2001-2002)
Glass
13 x 54 x 12 cm



Jens Pfeifer
Guns (2001-2002)
Glass
11 x 52 x 14 cm



Jens Pfeifer
Guns (2001-2002)
Glass
15 x 80 x 15 cm



Jens Pfeifer
Guns (2001-2002)
Glass
15 x 57 x 15 cm



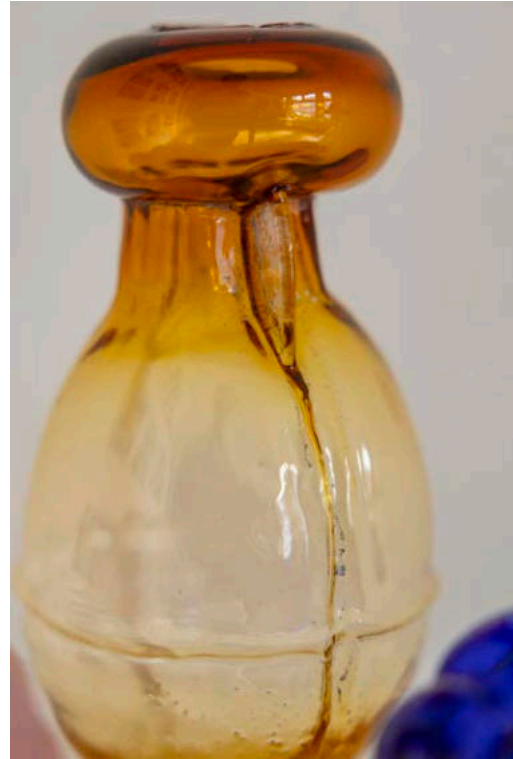
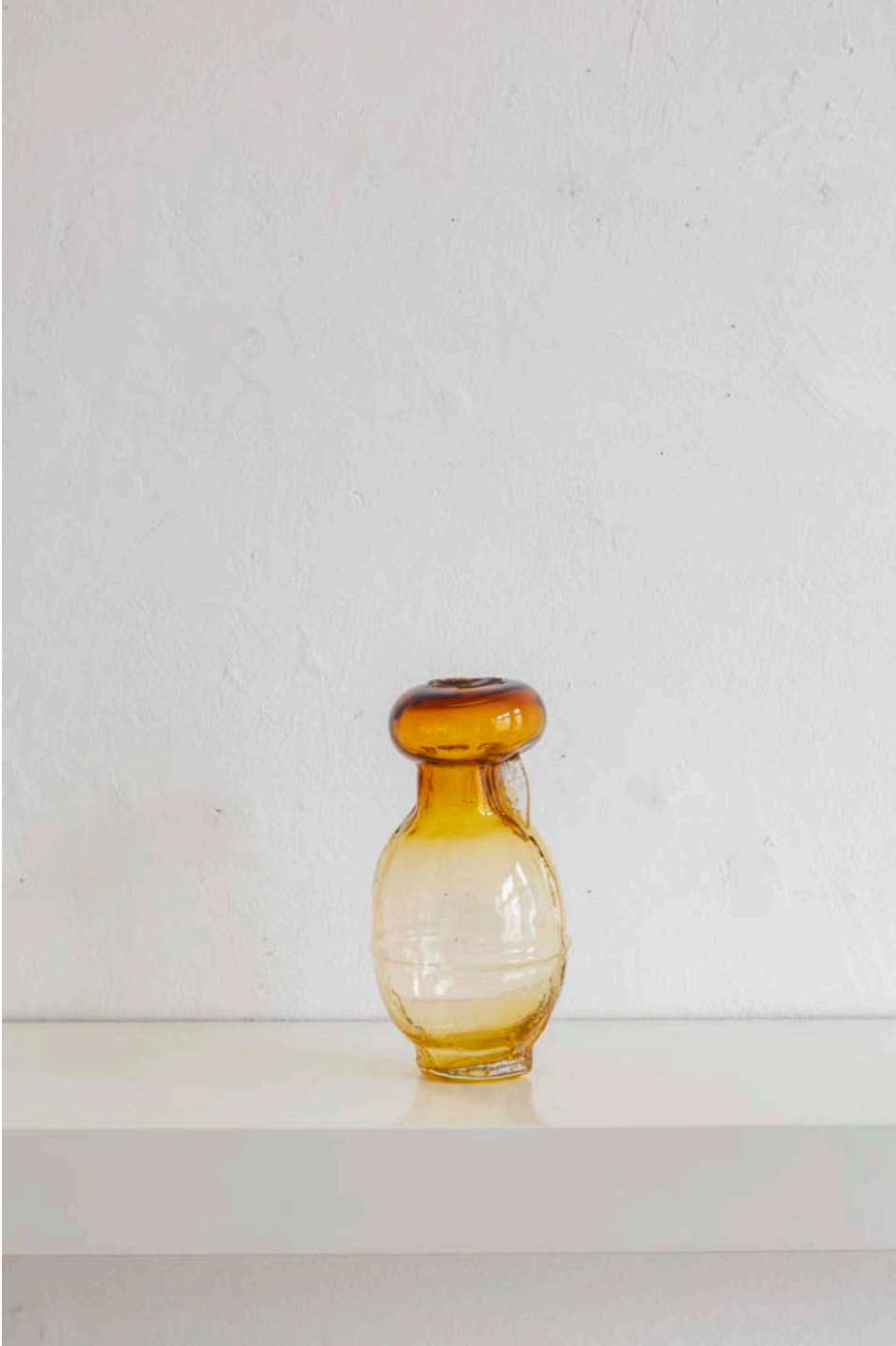
Jens Pfeifer
Guns (2001-2002)
Glass
11 x 59 x 13 cm



Jens Pfeifer
Guns (2001-2002)
Glass
13 x 54 x 13 cm



Jens Pfeifer
Guns (2001-2002)
Glass
14 x 8 (diameter) cm



Jens Pfeifer
Guns (2001-2002)
Glass
17 x 8 (diameter) cm



Jens Pfeifer
Guns (2001-2002)
Glass
14 x 9 (diameter) cm



Explore this exhibition
[ONLINE](#)



LUMEN TRAVO

Lijnbaansgracht 314, 1017 WZ Amsterdam, NL
info@lumentravo.nl
31 (0) 20 6270 883

www.lumentravo.nl